

CERTIFICATE OF PLANT DESIGN REGISTRATION

Work Health & Safety Act 2011
Work Health & Safety Regulation 2011

ABN: 81 913 830 179
Phone: 13 10 50

Registration No: **PV 6-211877/17**

Issue Date: **7/04/2017**

Registration Holder: DANFOSS A/S

Postal Address: 81 NORBORGVEJ
NORDBORG 6430
DENMARK

Plant Type: Pressure Vessel Original

Model Number/ Trade Name: SCROLL COMPRESSOR SHELL NO 14

Technical Standard : EN 14276-1:2006 + A1:2011

Engineering Principles: No

Drawing Number Design:

Design Description:

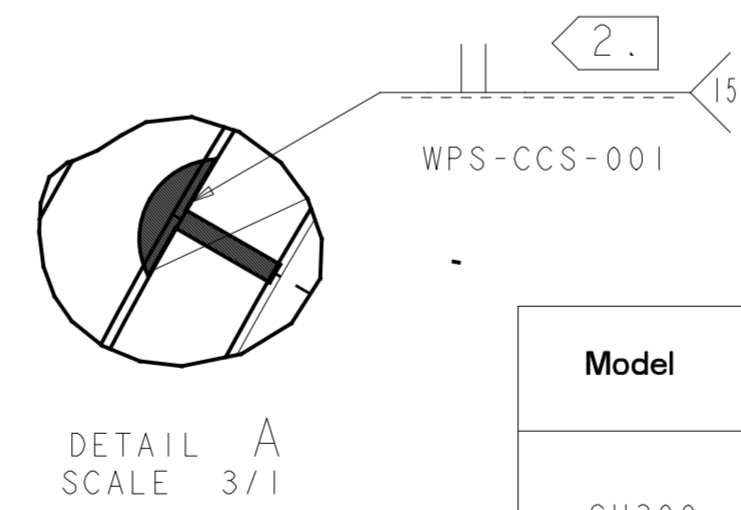
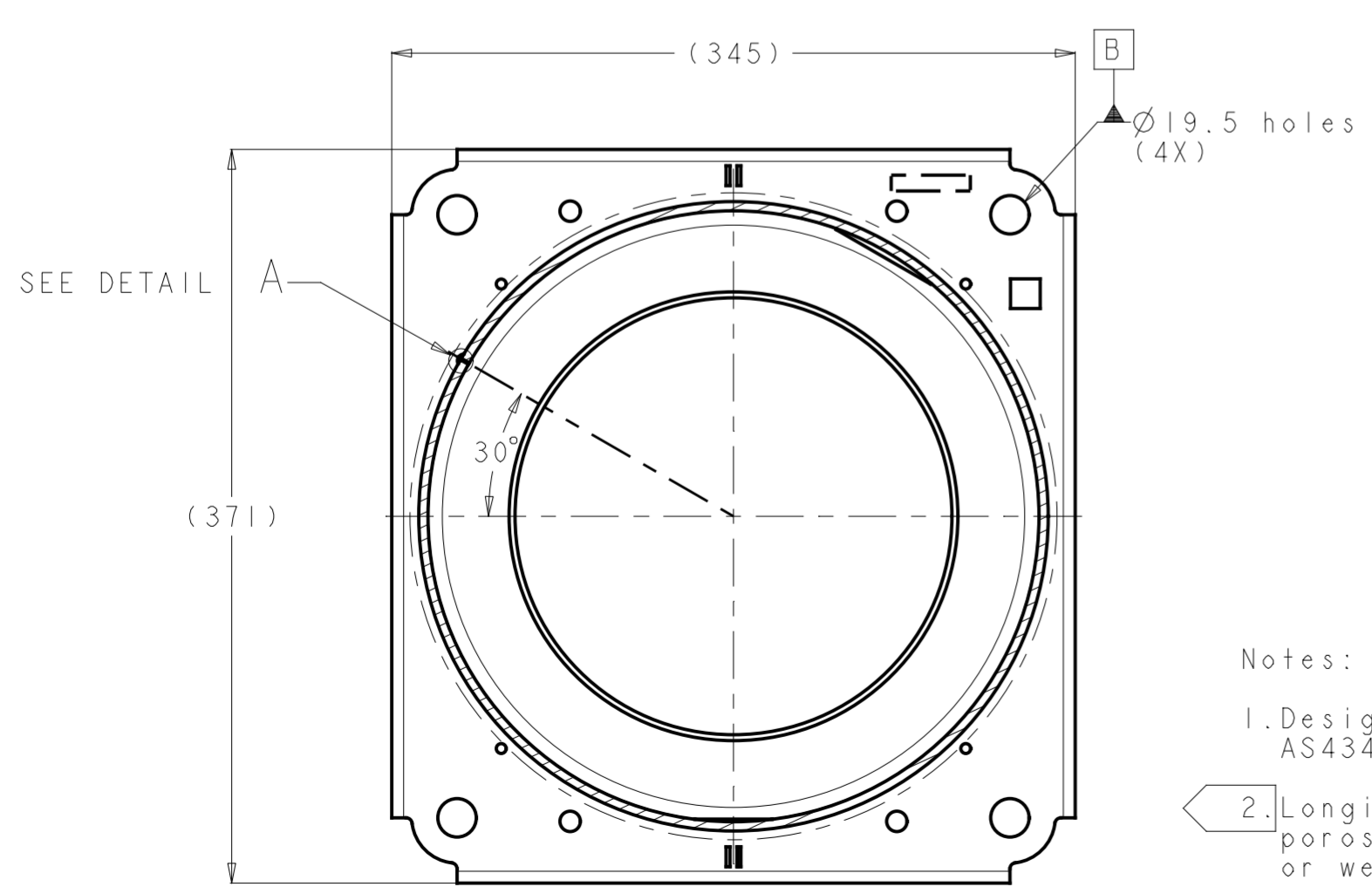
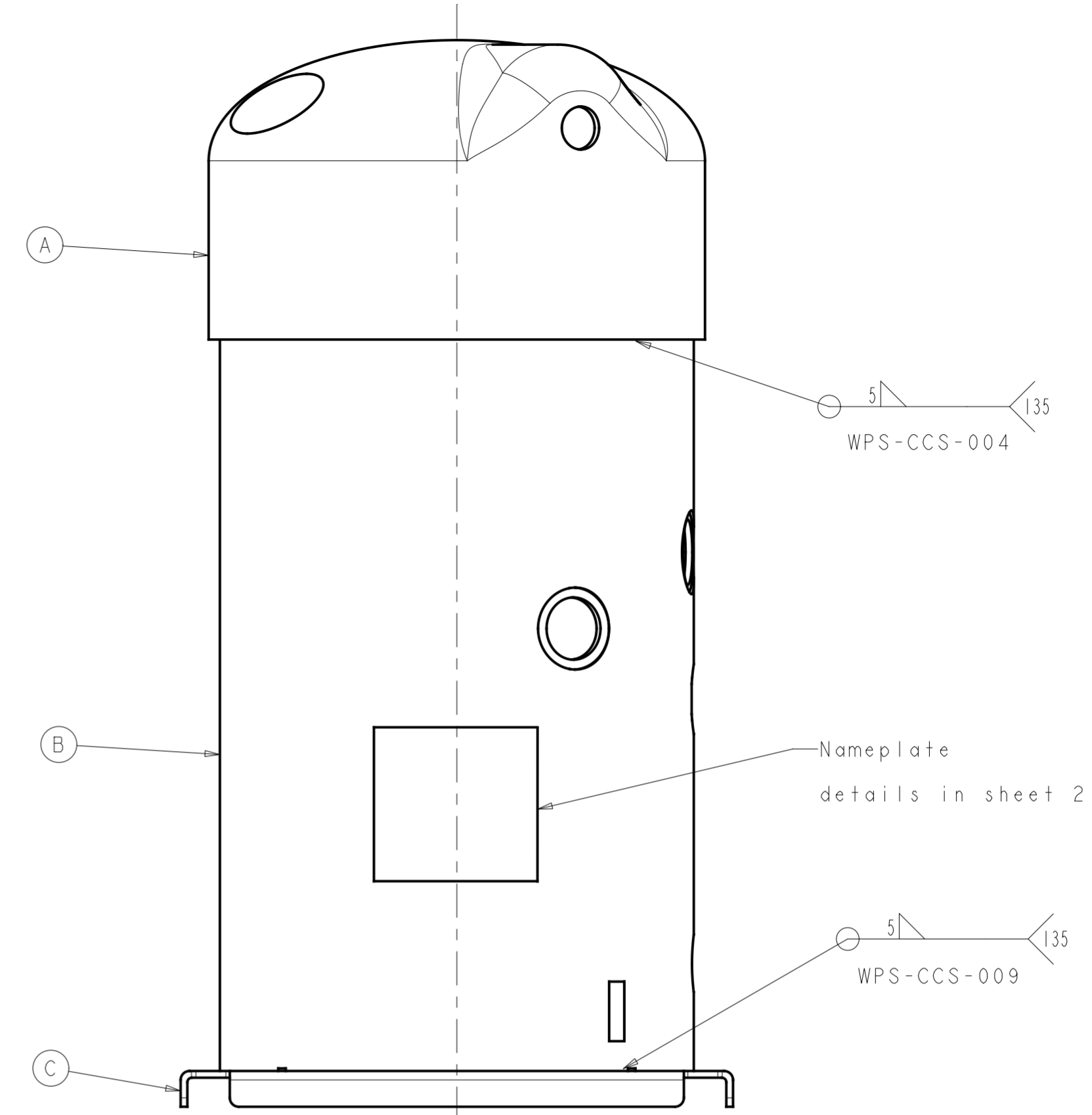
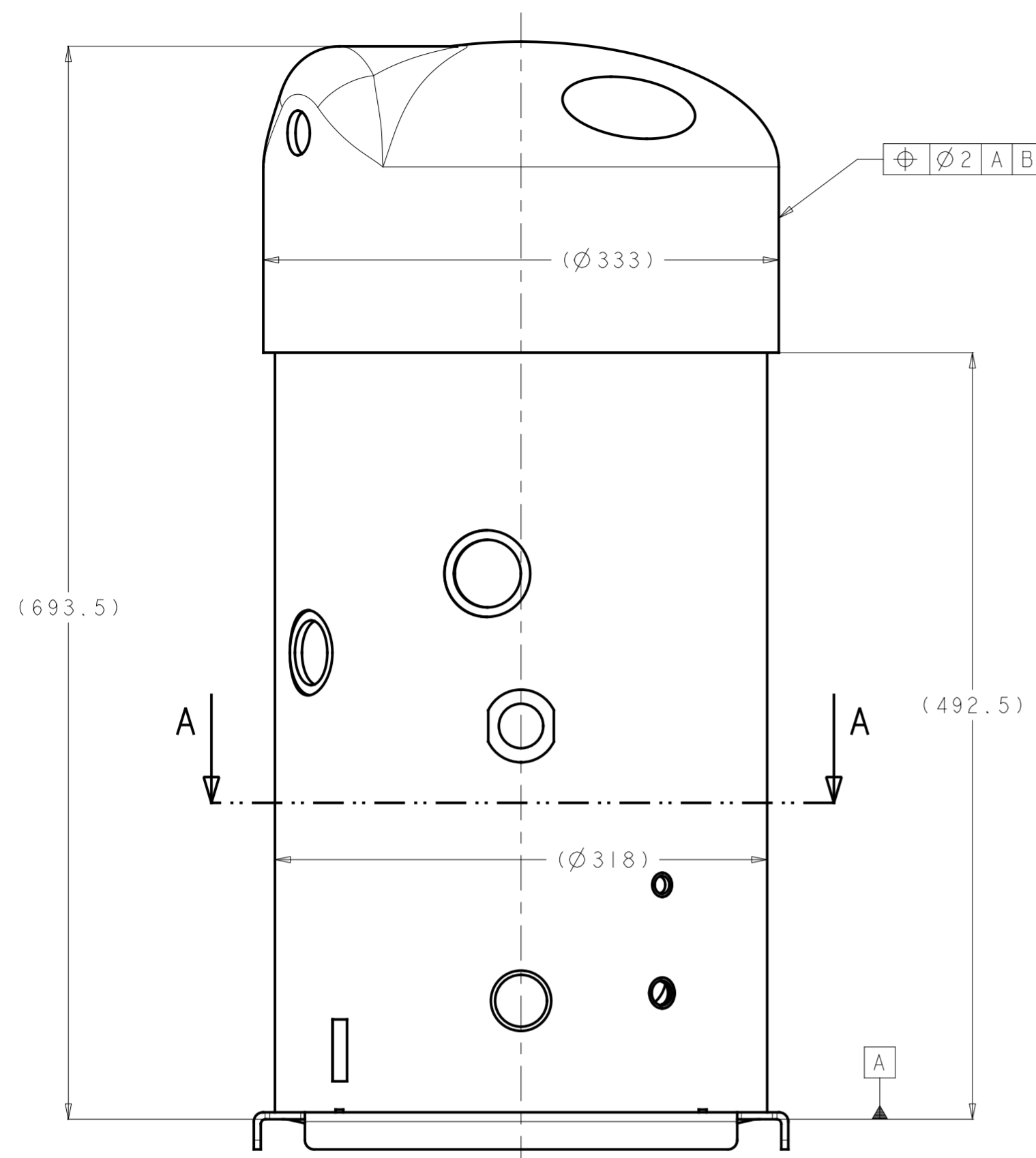
Hazard Level	C
Contents	Harmful
Chamber 1 Volume (l)	28.4
Chamber 1 Design Pressure (kPa)	0 TO 3020
Chamber 1 Temperature (°C)	-35 TO 51
Chamber 1 Fluid Type	Gas
Drawing Number & Revisions	9850280_808 REV A
Pressure Vessel	Other
Other Type	HERMETIC COMPRESSOR SHELL
Number of Chambers	1

Note: The design of an item of plant registered under the Occupational Health and Safety Regulation immediately before the repeal of that regulation is deemed to have been registered under part 5.3 of the WHS Regulation

Fee Paid: \$ 272.08

Receipt Date: 31/03/2017

Receipt No: 30-1712



DETAIL A
SCALE 3/1

	Pressure (bars)	Volume(L)	TSMX (°C)	TSMI (°C)
Lower Pressure	30.2	28.4	51	-35
High Pressure	45	4.2	150	-35

Model	Part	description	Drawing No.	CNCC			FRCC		
				Thickness MIN.	Material Grade	Material Standard	Thickness MIN.	Material Grade	Material Standard
SH300	A	upper shell	5312370	5.5mm	SPHC	Q/BQB 302	4.2mm	DD13	EN 10111
	B	mid shell	5312366	4.55mm	SPHE	Q/BQB 302	4.55mm	DD13	EN 10111
	C	lower shell	5312523	4.77mm	S420MC	Q/BQB 311	4.77mm	S420MC	EN10149-1 and 2


- Notes:
- Design code: EN13445, EN14276-1, AS4343: Hazard level C.
 - Longitudinal continuous welding, without porosities, with a full penetration or welding with a bead visible inside the shell.
 - Compressor Model: SJ300, SH300, PSH064 (FRCC) SJ300, SH300 (CNCC)

General Tolerances Table	Drawing Status : change in progress			Surface Area (m2)	Estimated Mass (Kg)	Key characteristic Critical characteristic According to Danfoss standard 50220024
	Projection	Scale	Size			
Roughness (µm)	A	Creation	10-10-2016	1/3	A2	Material : -
Revision	ECR Number	Date				
Designer	Wu Fang					
Approval	Kong Haili					
ISO 8015 ISO 1101				Confidential: Property of Danfoss Commercial Compressors. Not to be handed over to copied or used by third party. Two or three dimensional reproduction of contents to be authorized by Danfoss CC.		Designation Scroll Compressor Shell No.14
Sheet 1 of 2						A
A Dwg N° 9850280 808						A

SECTION A-A



Nameplate

General Tolerances Table	Drawing Status : change in progress				▽ Key characteristic ⊕ Critical characteristic According to Danfoss standard 50220024 Material : - Designation Scroll Compressor Shell No.14
	Surface Area (m ²)	Estimated Mass (Kg)	Projection	Scale	
Roughness (μm)	A	Creation	10-10-2016		
	Revision	ECR Number	Date		
	Designer	Wu Fang			
	Approval	Kong Haili			
ISO 8015 ISO 1101	Confidential: Property of Danfoss Commercial Compressors. Not to be handed over to copied or used by third party. Two or three dimensional reproduction of contents to be authorized by Danfoss CC.				
Sheet 2 of 2				A	Dwg N° 9850280 808