



FEATURES

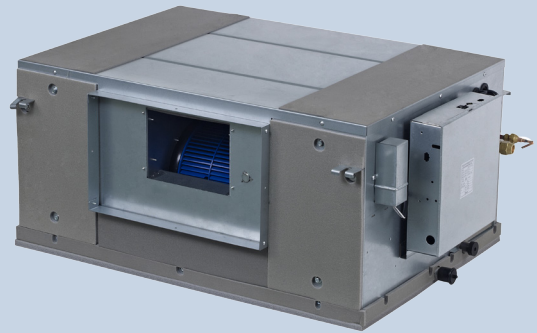
Compact and versatile, is the ideal choice for new or refurbished buildings.

Slim line profile that allows installation in applications with low available height.

Reliable and durable unit thanks to high efficient DC rotary inverter driven compressor.

Built in Drain Pump that can lift the condensate water up to 750 mm.

Choice of wired (optional) or wireless controls (standard).



Unit



Remote controle

Wired optional

Notes:
Actual product picture may vary from picture on brochure

TECHNICAL SPECIFICATIONS

INDOOR UNIT		42SMV-80H2	42SMV-100H2
OUTDOOR UNIT		38SMV-80H2	38SMV-100H2
Cooling capacity	kW	20	25
Heating capacity	kW	22.5	26
Temp range cooling	°C	-15~48	-15~48
Temp range heating	°C	-15~27	-15~27
EER / COP		3.11/3.66	3.10/3.61
Power supply	V-ph-Hz	380-415V~3Ph ~50Hz	380-415V~3Ph ~50Hz
Current (cooling)	A	11.5	13.5
Input (cooling)	W	7200	8400
Current (heating)	A	11.5	13.5
Input (heating)	W	6700	7900
Refrigerant amount R410a	kg	6.2	6.2
Liquid side / Gas side	mm	9.52 / 19.1	9.52 / 22.2
Max. piping length	m	120	120
Max height difference	m	30	30

INDOOR UNIT			
Sound pressure level (high/med/low)	dB(A)	59/55/52	59/55/52
Airflow (high/med/low)	m³/h	4268/3780/3200	4268/3780/3200
Weight unit	kg	115	115
Dimensions unit (WxDxH)	mm	1425 x 500 x 928	1425 x 500 x 928

OUTDOOR UNIT			
Sound power level	dB(A)	59	60
Sound pressure level	dB(A)	59	60
Airflow	m³/h	10494	10494
Weight	kg	146.5	147
Dimensions (WxDxH)	mm	1120 x 400 x 1558	1120 x 400 x 1558

Notes:

Cooling Capacities are based on 27°C (WB) indoor air temperature and 35 °C (DB) / 24 °C (WB) outdoor air temperature.
 Heating Capacities are based on 20 °C (DB) / 15 °C (WB) indoor air temperature and 7 °C (DB) / 6 °C (WB) outdoor air temperature.
 Technical Specifications and values are subject to change without prior notice

